

**VERMONT STATEWIDE DISTRICT COURT  
SELECTED FELONY OFFENSES  
NUMBER OF FINAL CHARGES\* BY YEAR OF DISPOSITION, 1987 - 6/2004**

| Year of Disposition | Aggravated Assault | Aggravated Sexual Assault | Aggravated Domestic Assault | Kidnap (13-2405) | L&L with a Child | Murder 1st Degree | Murder 2nd Degree | Murder Unknown Degree | Sexual Assault | Sexual Assault on a Minor | Total        |
|---------------------|--------------------|---------------------------|-----------------------------|------------------|------------------|-------------------|-------------------|-----------------------|----------------|---------------------------|--------------|
| 1987                | 64                 | 0                         | 0                           | 0                | 78               | 1                 | 2                 | 5                     | 40             | 100                       | 290          |
| 1988                | 41                 | 0                         | 0                           | 0                | 88               | 1                 | 2                 | 5                     | 66             | 80                        | 283          |
| 1989                | 59                 | 0                         | 0                           | 0                | 113              | 1                 | 1                 | 7                     | 71             | 81                        | 333          |
| 1990                | 76                 | 1                         | 0                           | 0                | 166              | 0                 | 1                 | 5                     | 74             | 88                        | 411          |
| 1991                | 82                 | 9                         | 0                           | 15               | 147              | 2                 | 1                 | 6                     | 82             | 119                       | 463          |
| 1992                | 88                 | 17                        | 0                           | 3                | 145              | 3                 | 5                 | 11                    | 88             | 139                       | 499          |
| 1993                | 80                 | 26                        | 8                           | 11               | 164              | 2                 | 5                 | 5                     | 56             | 155                       | 512          |
| 1994                | 67                 | 41                        | 48                          | 8                | 150              | 4                 | 2                 | 5                     | 46             | 115                       | 486          |
| 1995                | 86                 | 37                        | 101                         | 9                | 133              | 4                 | 3                 | 6                     | 41             | 147                       | 567          |
| 1996                | 78                 | 38                        | 127                         | 7                | 104              | 0                 | 3                 | 8                     | 35             | 111                       | 511          |
| 1997                | 83                 | 40                        | 194                         | 13               | 116              | 0                 | 1                 | 4                     | 40             | 141                       | 632          |
| 1998                | 73                 | 30                        | 173                         | 6                | 135              | 2                 | 2                 | 3                     | 45             | 114                       | 583          |
| 1999                | 86                 | 28                        | 173                         | 23               | 103              | 2                 | 3                 | 3                     | 33             | 131                       | 585          |
| 2000                | 86                 | 33                        | 187                         | 19               | 111              | 0                 | 3                 | 5                     | 47             | 101                       | 592          |
| 2001                | 80                 | 40                        | 219                         | 8                | 81               | 0                 | 4                 | 8                     | 58             | 104                       | 602          |
| 2002                | 67                 | 13                        | 194                         | 6                | 78               | 0                 | 6                 | 1                     | 25             | 88                        | 478          |
| 2003                | 81                 | 32                        | 247                         | 19               | 112              | 6                 | 5                 | 2                     | 45             | 142                       | 691          |
| 1-6/2004            | 42                 | 27                        | 130                         | 8                | 68               | 1                 | 2                 | 6                     | 26             | 80                        | 390          |
| <b>Total</b>        | <b>1,319</b>       | <b>412</b>                | <b>1,801</b>                | <b>155</b>       | <b>2,092</b>     | <b>29</b>         | <b>51</b>         | <b>95</b>             | <b>918</b>     | <b>2,036</b>              | <b>8,908</b> |

\* Based on the number of charges, not the number of people.

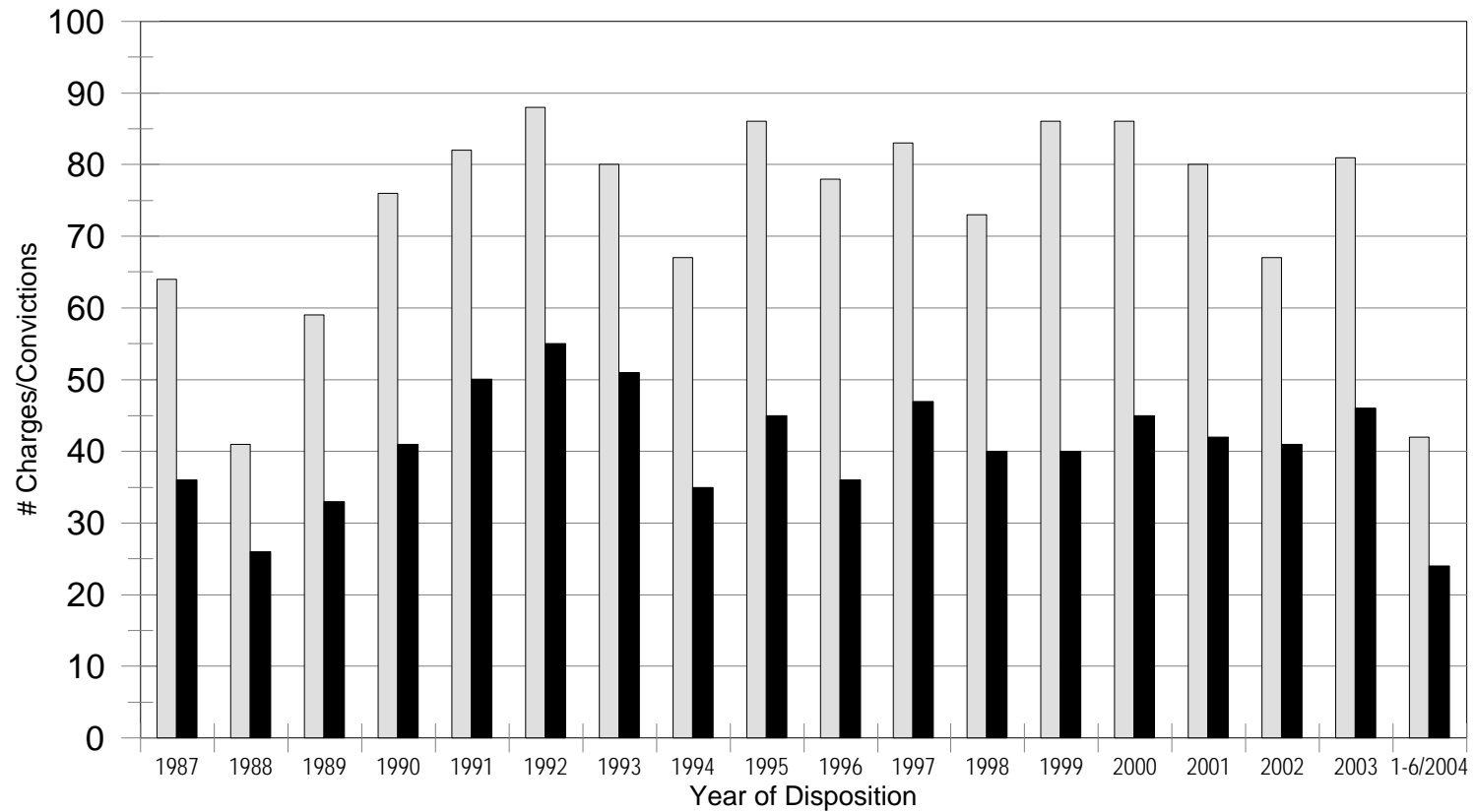
**VERMONT STATEWIDE DISTRICT COURT  
SELECTED FELONY OFFENSES  
NUMBER OF FINAL CHARGES\* CONVICTED BY YEAR OF DISPOSITION, 1987 - 6/2004**

| Year of Disposition | Aggravated Assault | Aggravated Sexual Assault | Aggravated Domestic Assault | Kidnap (13-2405) | L&L with a Child | Murder 1st Degree | Murder 2nd Degree | Murder Unknown Degree | Sexual Assault | Sexual Assault on a Minor | Total        |
|---------------------|--------------------|---------------------------|-----------------------------|------------------|------------------|-------------------|-------------------|-----------------------|----------------|---------------------------|--------------|
| 1987                | 36                 | 0                         | 0                           | 0                | 45               | 1                 | 1                 | 2                     | 16             | 39                        | 140          |
| 1988                | 26                 | 0                         | 0                           | 0                | 51               | 0                 | 2                 | 1                     | 33             | 40                        | 153          |
| 1989                | 33                 | 0                         | 0                           | 0                | 55               | 0                 | 1                 | 5                     | 30             | 37                        | 161          |
| 1990                | 41                 | 1                         | 0                           | 0                | 93               | 0                 | 1                 | 2                     | 25             | 50                        | 213          |
| 1991                | 50                 | 3                         | 0                           | 2                | 78               | 0                 | 1                 | 6                     | 37             | 65                        | 242          |
| 1992                | 55                 | 8                         | 0                           | 0                | 74               | 2                 | 5                 | 5                     | 32             | 81                        | 262          |
| 1993                | 51                 | 11                        | 5                           | 5                | 74               | 1                 | 5                 | 4                     | 24             | 85                        | 265          |
| 1994                | 35                 | 7                         | 23                          | 2                | 76               | 3                 | 2                 | 3                     | 17             | 48                        | 216          |
| 1995                | 45                 | 18                        | 62                          | 6                | 74               | 3                 | 2                 | 3                     | 16             | 55                        | 284          |
| 1996                | 36                 | 5                         | 66                          | 4                | 48               | 0                 | 2                 | 0                     | 11             | 63                        | 235          |
| 1997                | 47                 | 24                        | 110                         | 5                | 69               | 0                 | 1                 | 1                     | 13             | 77                        | 347          |
| 1998                | 40                 | 15                        | 98                          | 2                | 74               | 1                 | 2                 | 2                     | 19             | 61                        | 314          |
| 1999                | 40                 | 13                        | 97                          | 10               | 64               | 2                 | 1                 | 0                     | 13             | 75                        | 315          |
| 2000                | 45                 | 17                        | 87                          | 8                | 62               | 0                 | 2                 | 4                     | 11             | 58                        | 294          |
| 2001                | 42                 | 24                        | 111                         | 4                | 42               | 0                 | 4                 | 7                     | 14             | 53                        | 301          |
| 2002                | 41                 | 6                         | 117                         | 1                | 55               | 0                 | 6                 | 0                     | 7              | 47                        | 280          |
| 2003                | 46                 | 14                        | 144                         | 6                | 71               | 2                 | 4                 | 1                     | 15             | 98                        | 401          |
| 1-6/2004            | 24                 | 9                         | 78                          | 2                | 40               | 1                 | 2                 | 4                     | 13             | 53                        | 226          |
| <b>Total</b>        | <b>733</b>         | <b>175</b>                | <b>998</b>                  | <b>57</b>        | <b>1,145</b>     | <b>16</b>         | <b>44</b>         | <b>50</b>             | <b>346</b>     | <b>1,085</b>              | <b>4,649</b> |

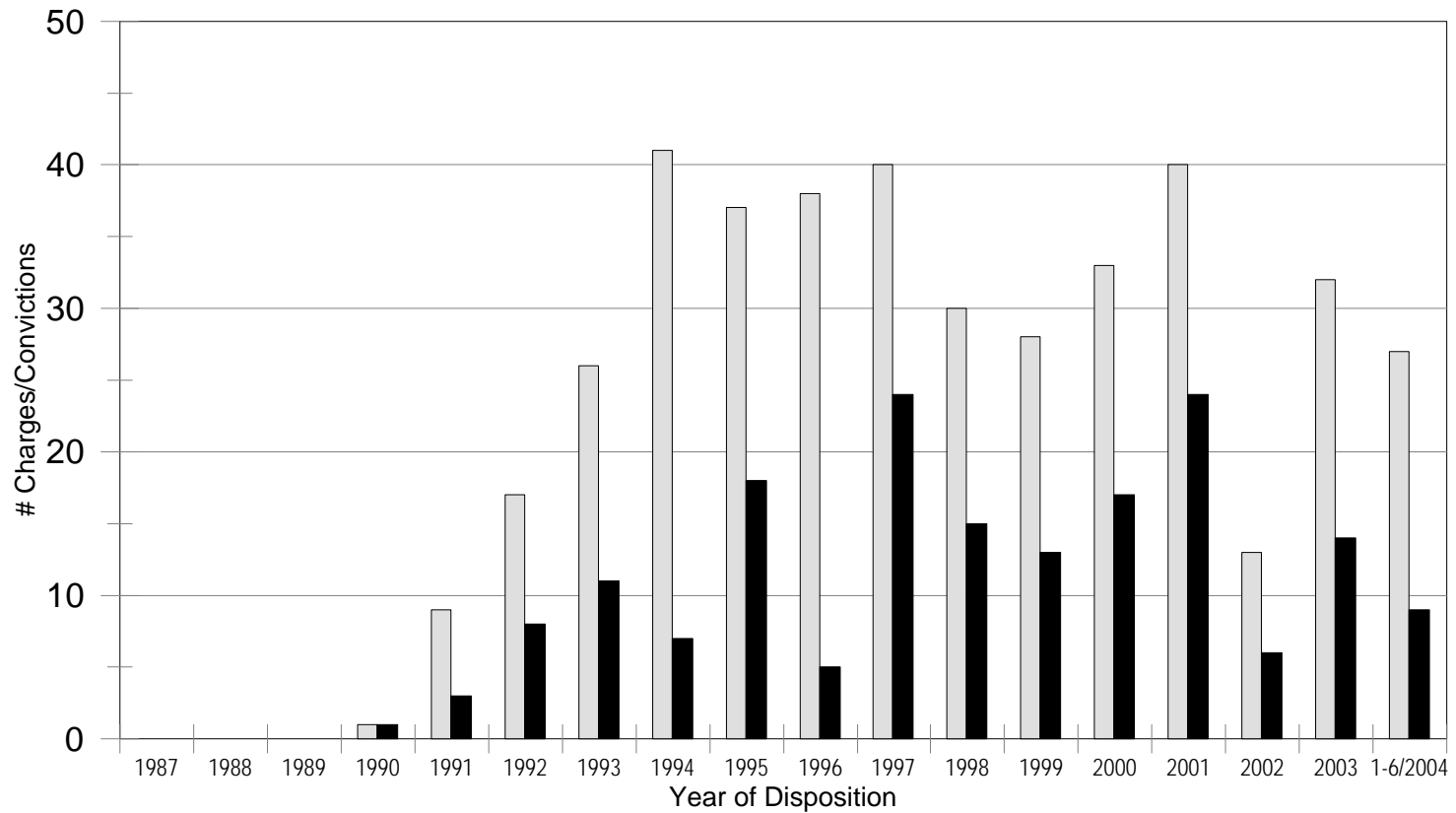
\* Based on the number of charges, not the number of people.

# Aggravated Assault

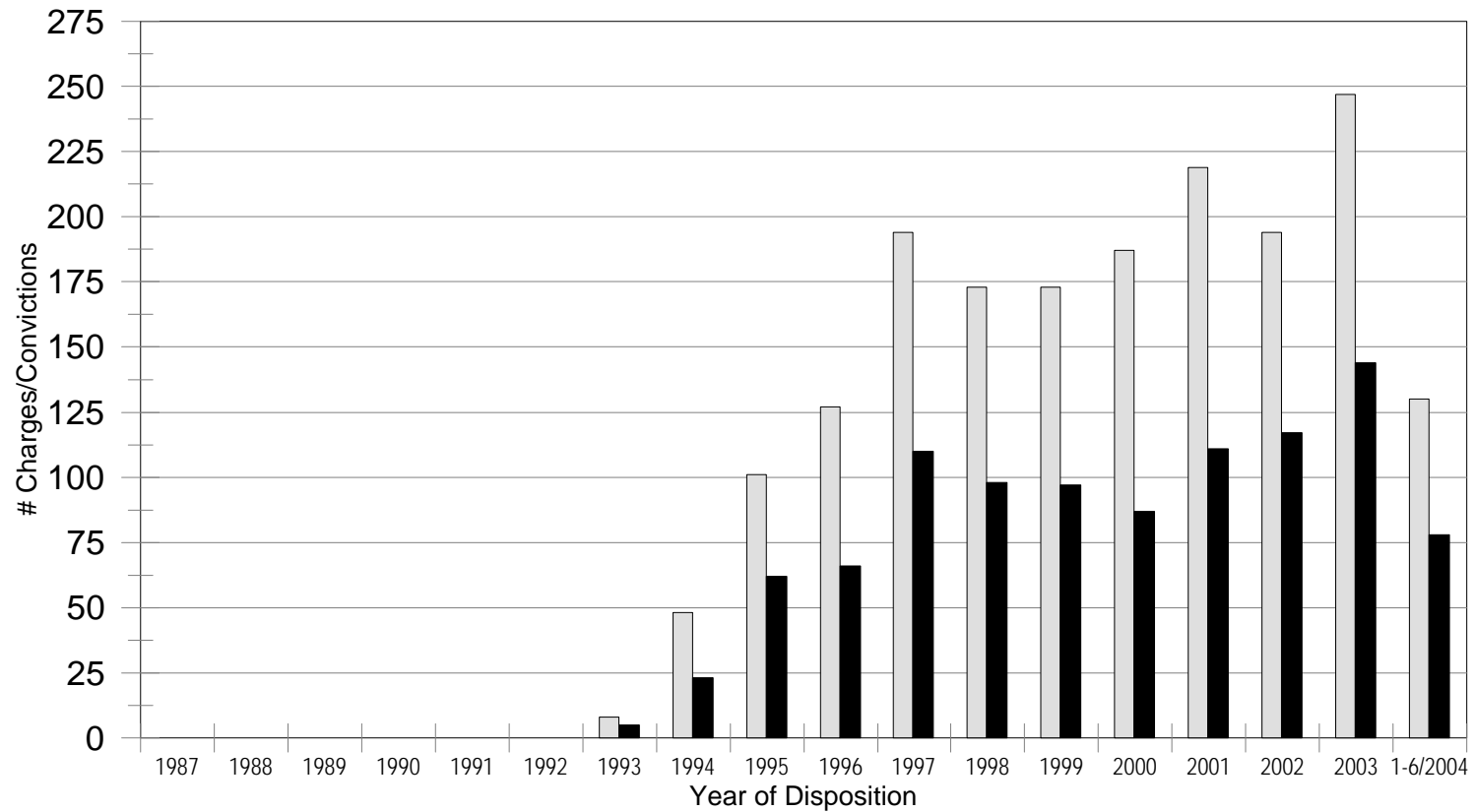
## # Final Charges and # Convictions



# Aggravated Sexual Assault # Final Charges and # Convictions

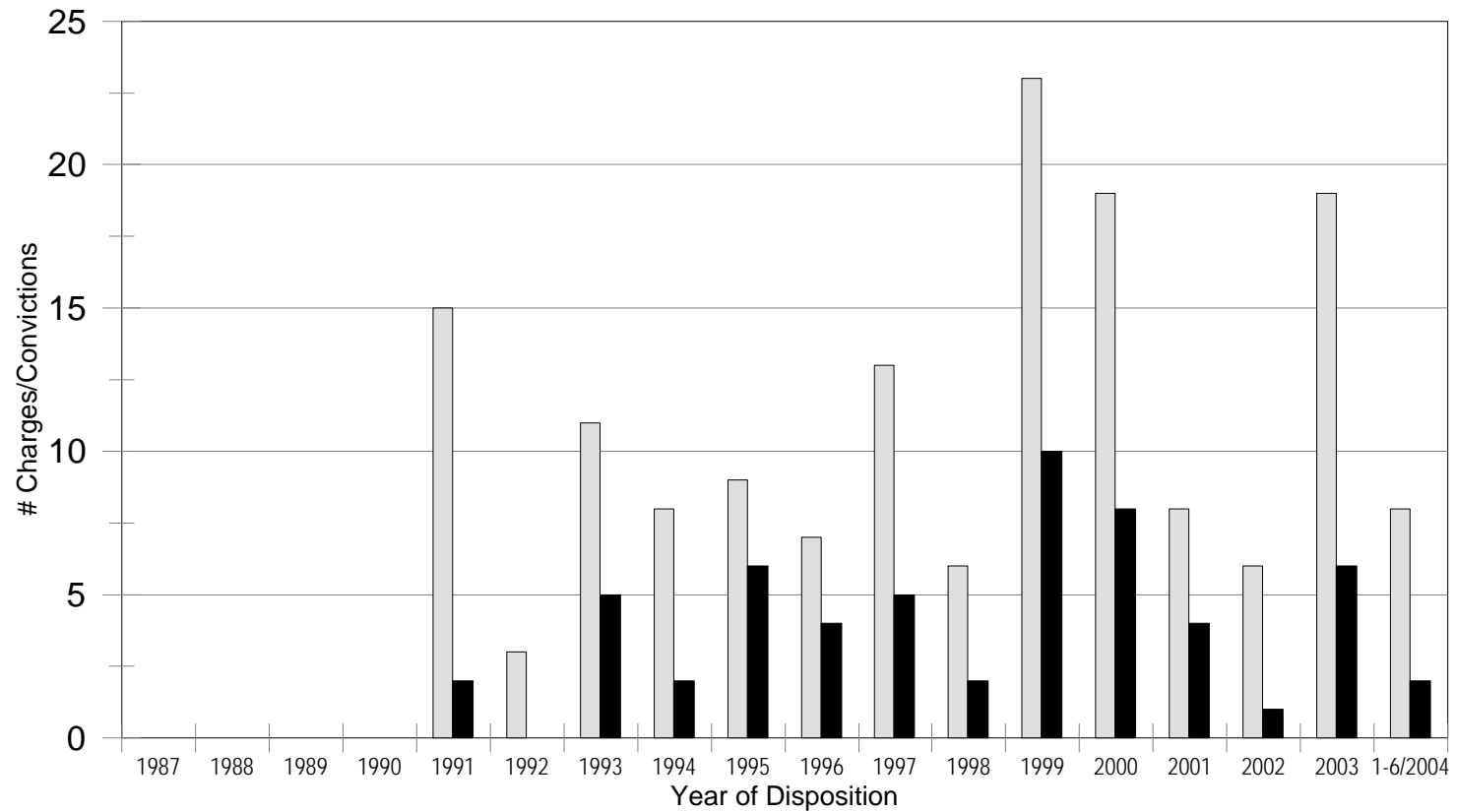


# Aggravated Domestic Assault # Final Charges and # Convictions



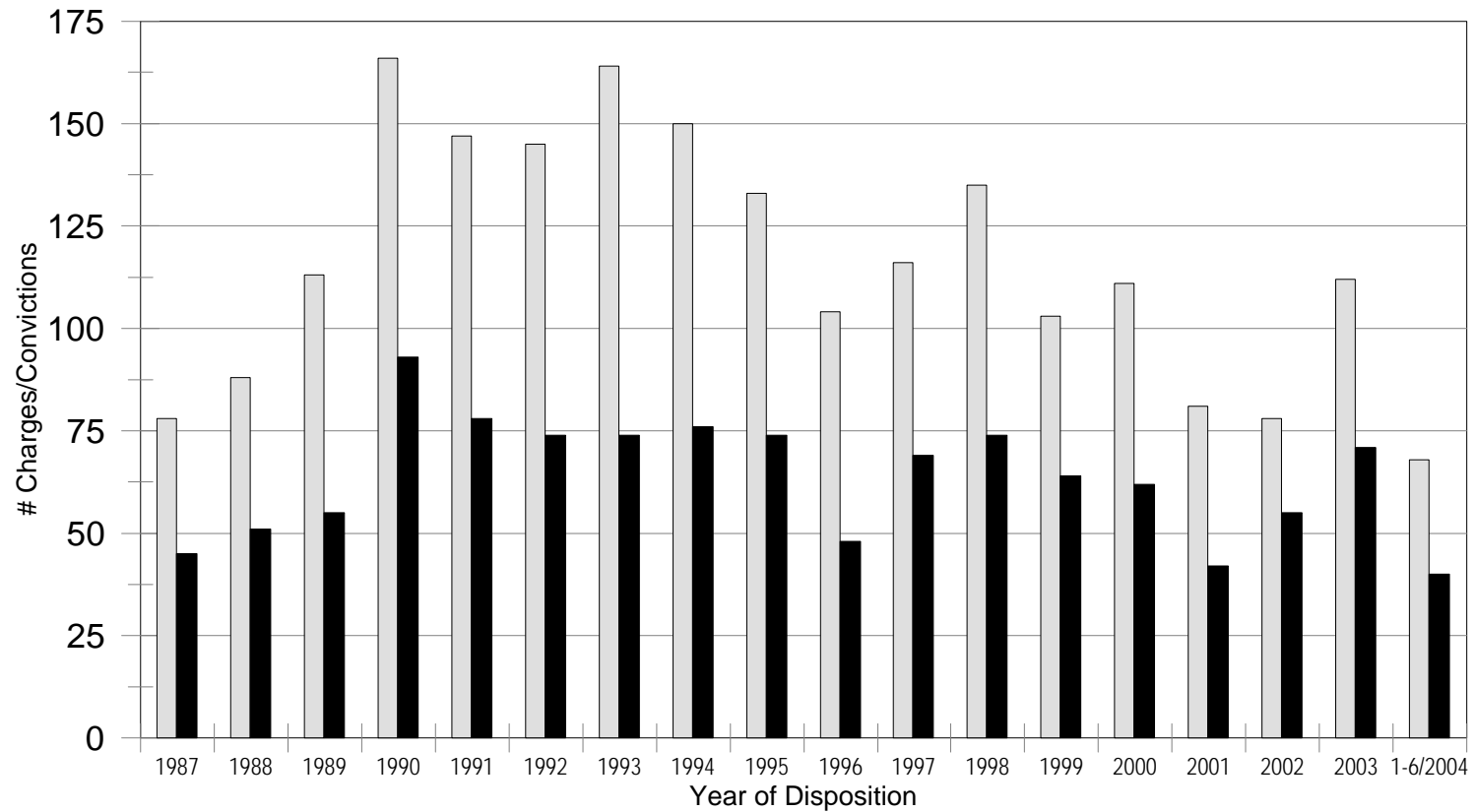
# Kidnap (13-2405)

## # Final Charges and # Convictions



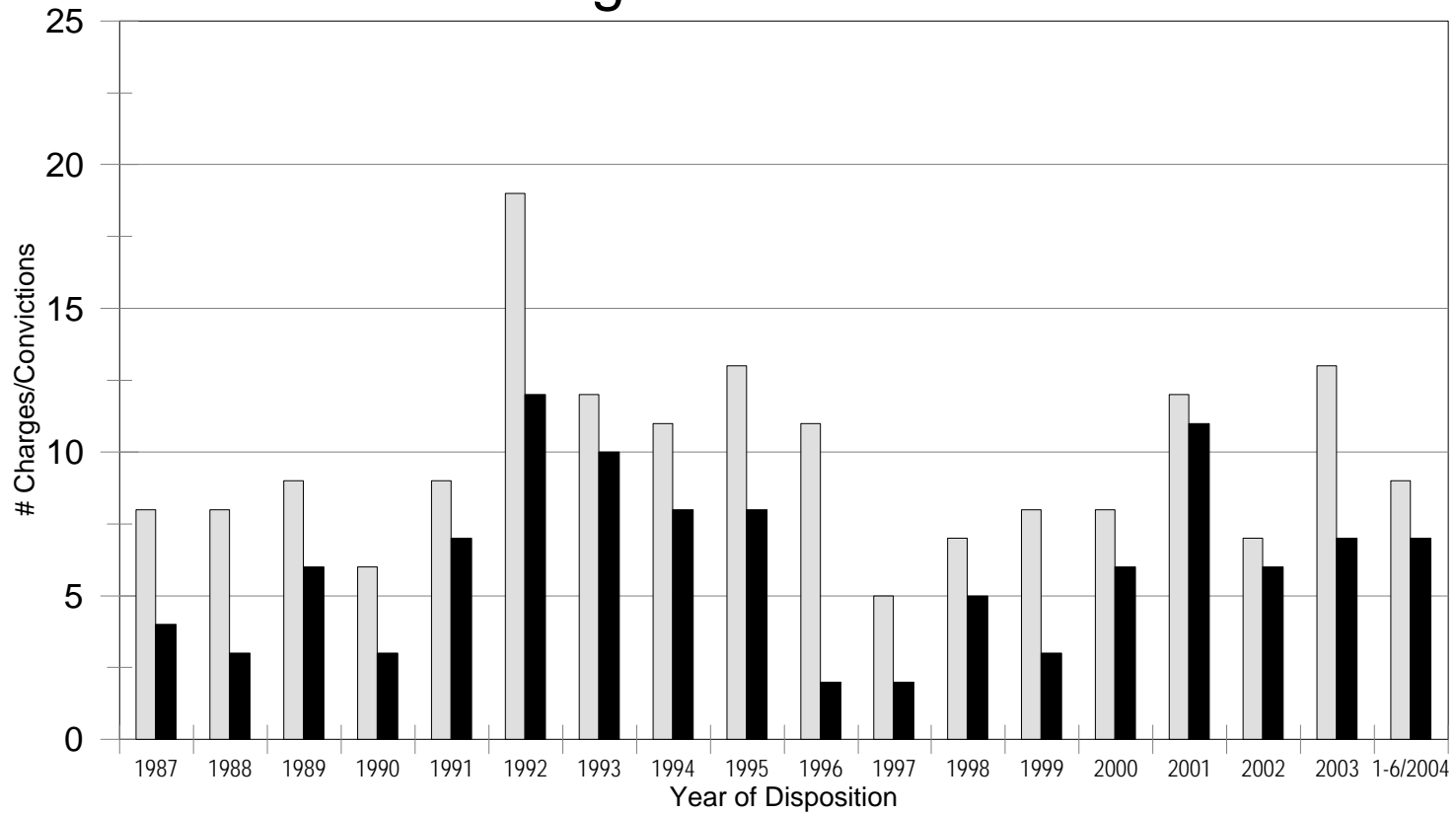
# L&L with a Child

## # Final Charges and # Convictions



# Murder \*

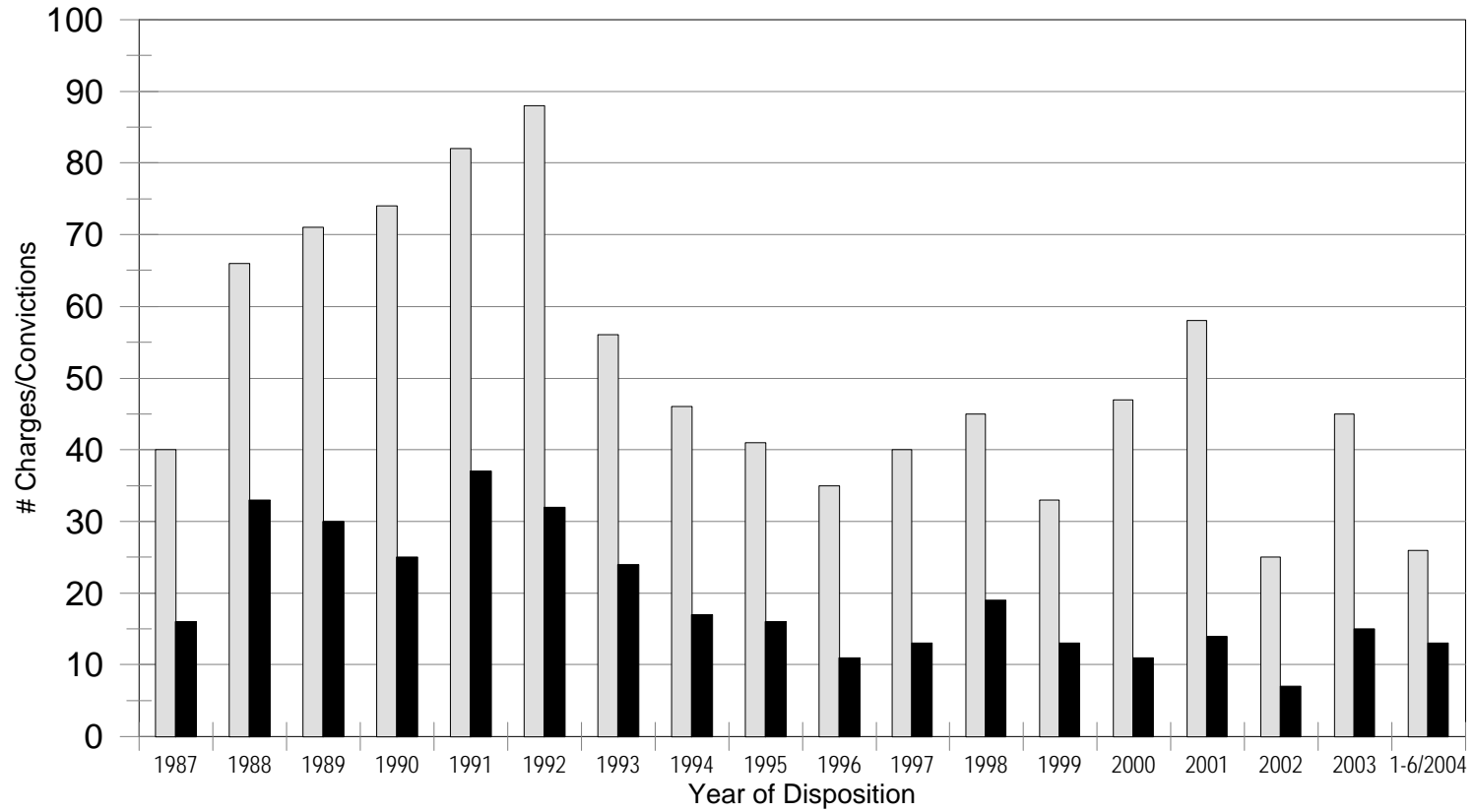
## # Final Charges and # Convictions



\* Includes 1st degree, 2nd degree, and unknown degree.

# Sexual Assault

## # Final Charges and # Convictions



# Sexual Assault on a Minor

## # Final Charges and # Convictions

