

VERMONT TRAFFIC CITATIONS FILED 1998 - 2003 *
NUMBER AND RATE OF CITATIONS
DRIVERS AGE 16

<u>Year Citation Issued</u>	<u># Citations</u>	<u># Licensed Drivers</u>	<u>Rate per 1,000 Licensed Drivers</u>
1998	1,668	7,232	230.6
1999	1,598	6,814	234.5
2000	1,749	7,185	243.4
2001	1,794	7,118	252.0
2002	1,594	7,243	220.1
2003	1,195	7,354	162.5
Total	9,598	42,946	223.5

* Includes data entered through 9/30/04.

Produced by the Vermont Center for Justice Research, 11/04.
 J:\Requests\Job1519\GraduatedLicenseCites.wb3-NandRate

VERMONT TRAFFIC CITATIONS FILED 1998 - 2003 *
NUMBER AND RATE OF CITATIONS
DRIVERS AGE 17

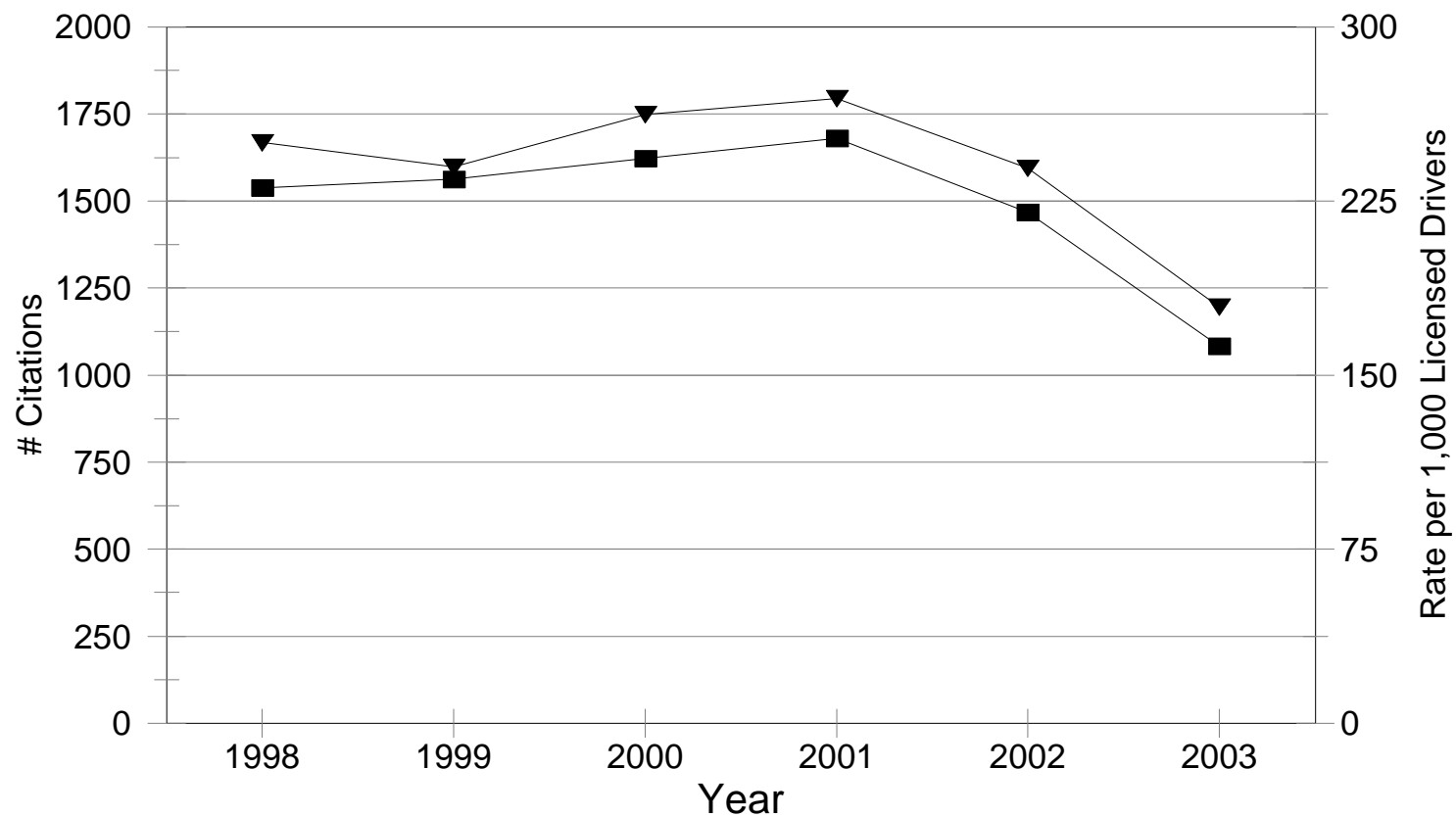
<u>Year Citation Issued</u>	<u># Citations</u>	<u># Licensed Drivers</u>	<u>Rate per 1,000 Licensed Drivers</u>
1998	2,940	7,982	368.3
1999	3,015	8,015	376.2
2000	3,287	7,829	419.8
2001	3,482	8,021	434.1
2002	3,307	7,905	418.3
2003	2,551	7,892	323.2
Total	18,582	47,644	390.0

* Includes data entered through 9/30/04.

Produced by the Vermont Center for Justice Research, 11/04.
 J:\Requests\Job1519\GraduatedLicenseCites.wb3-NandRate

Traffic Citations Issued 1998-2003

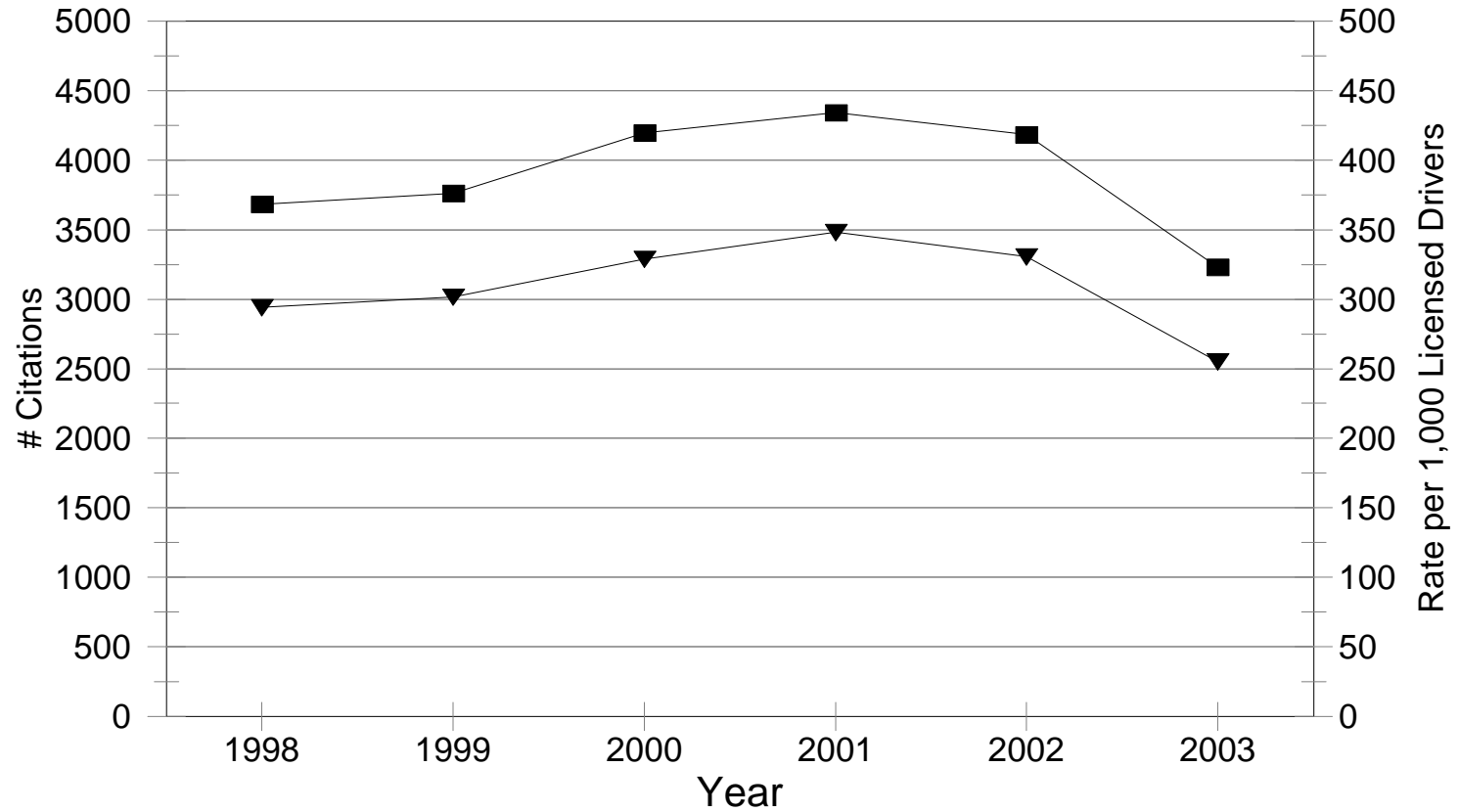
Drivers Age 16



▼ # Citations ■ Rate

Traffic Citations Issued 1998-2003

Drivers Age 17



▼ # Citations ■ Rate

VERMONT TRAFFIC CITATIONS FILED 1998 - 2003 *
TRAFFIC CITATIONS BY TYPE
DRIVERS AGE 16

Citation	1998		1999		2000		2001		2002		2003		Total	
	N	%	N	%	N	%	N	%	N	%	N	%	N	%
Speeding	925	55.5%	921	57.6%	1,005	57.5%	967	53.9%	814	51.1%	586	49.0%	5,218	54.4%
Illegal Operator	132	7.9%	142	8.9%	131	7.5%	182	10.1%	240	15.1%	168	14.1%	995	10.4%
Moving Violation	195	11.7%	181	11.3%	178	10.2%	207	11.5%	189	11.9%	128	10.7%	1,078	11.2%
Inspection Violation	42	2.5%	43	2.7%	52	3.0%	60	3.3%	38	2.4%	32	2.7%	267	2.8%
No Insurance	70	4.2%	63	3.9%	54	3.1%	52	2.9%	67	4.2%	46	3.8%	352	3.7%
Registration Violation	66	4.0%	50	3.1%	60	3.4%	74	4.1%	62	3.9%	44	3.7%	356	3.7%
Equipment Violation	58	3.5%	43	2.7%	63	3.6%	46	2.6%	30	1.9%	39	3.3%	279	2.9%
All Others	180	10.8%	155	9.7%	206	11.8%	206	11.5%	154	9.7%	152	12.7%	1,053	11.0%
Total	1,668	100%	1,598	100%	1,749	100%	1,794	100%	1,594	100%	1,195	100%	9,598	100%
Seat Belt Violation	33		34		21		38		37		27		190	

* Includes data entered through 9/30/04.

Produced by the Vermont Center for Justice Research, 11/04.

J:\Requests\Job1519\GraduatedLicenseCites.wb3-CiteTypes

VERMONT TRAFFIC CITATIONS FILED 1998 - 2003 *
TRAFFIC CITATIONS BY TYPE
DRIVERS AGE 17

Citation	1998		1999		2000		2001		2002		2003		Total	
	N	%	N	%	N	%	N	%	N	%	N	%	N	%
Speeding	1,668	56.7%	1,728	57.3%	1,832	55.7%	1,927	55.3%	1,957	59.2%	1,384	54.3%	10,496	56.5%
Illegal Operator	231	7.9%	246	8.2%	272	8.3%	345	9.9%	316	9.6%	265	10.4%	1,675	9.0%
Moving Violation	259	8.8%	266	8.8%	286	8.7%	292	8.4%	246	7.4%	226	8.9%	1,575	8.5%
Inspection Violation	122	4.1%	110	3.6%	142	4.3%	144	4.1%	116	3.5%	90	3.5%	724	3.9%
No Insurance	130	4.4%	134	4.4%	127	3.9%	165	4.7%	127	3.8%	109	4.3%	792	4.3%
Registration Violation	103	3.5%	114	3.8%	124	3.8%	145	4.2%	103	3.1%	84	3.3%	673	3.6%
Equipment Violation	92	3.1%	87	2.9%	109	3.3%	88	2.5%	82	2.5%	82	3.2%	540	2.9%
All Others	335	11.4%	330	10.9%	395	12.0%	376	10.8%	360	10.9%	311	12.2%	2,107	11.3%
Total	2,940	100%	3,015	100%	3,287	100%	3,482	100%	3,307	100%	2,551	100%	18,582	100%
Seat Belt Violation	66		72		66		80		103		84		471	

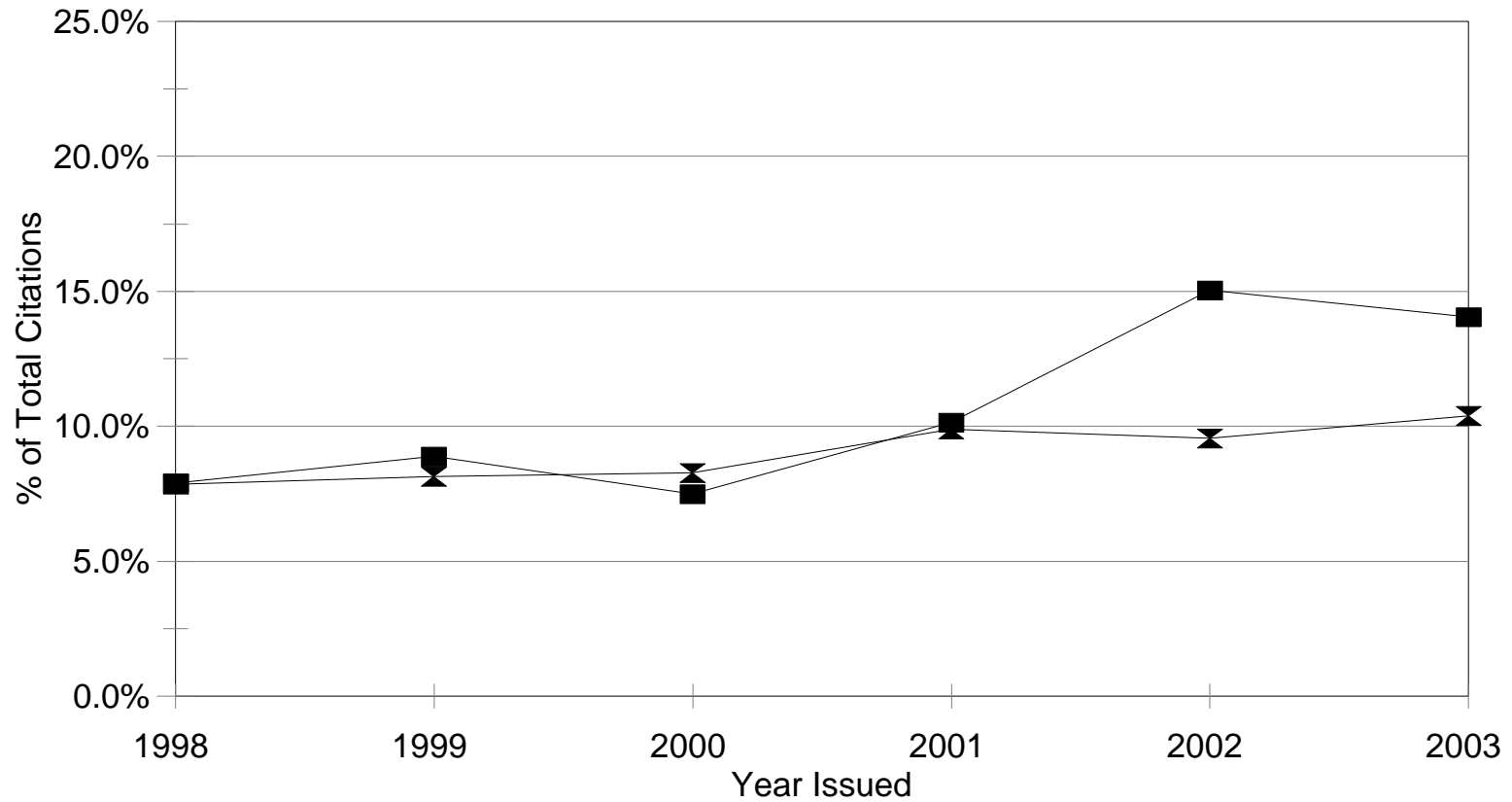
* Includes data entered through 9/30/04.

Produced by the Vermont Center for Justice Research, 11/04.

J:\Requests\Job1519\GraduatedLicenseCites.wb3-CiteTypes

Illegal Operator Citations 1998-2003

Drivers Age 16 and 17



■ Drivers Age 16 × Drivers Age 17

VERMONT TRAFFIC CITATIONS FILED 1998 - 2003 *
SPEEDING CITATIONS: MPH OVER POSTED SPEED LIMIT BY HIGHWAY TYPE
DRIVERS AGE 16

MPH Over Limit	1998						1999						2000					
	Interstate		Non-Interstate		Total		Interstate		Non-Interstate		Total		Interstate		Non-Interstate		Total	
	N	%	N	%	N	%	N	%	N	%	N	%	N	%	N	%	N	%
1 - 5	0	0.0%	1	0.1%	1	0.1%	0	0.0%	1	0.1%	1	0.1%	0	0.0%	1	0.1%	1	0.1%
6 - 10	1	1.1%	20	2.4%	21	2.3%	4	5.9%	32	3.8%	36	3.9%	4	5.1%	49	5.3%	53	5.3%
11 - 15	21	23.6%	176	21.1%	197	21.3%	11	16.2%	163	19.1%	174	18.9%	17	21.5%	175	18.9%	192	19.1%
16 - 20	28	31.5%	338	40.4%	366	39.6%	24	35.3%	334	39.2%	358	38.9%	20	25.3%	328	35.4%	348	34.6%
21 - 25	14	15.7%	148	17.7%	162	17.5%	16	23.5%	156	18.3%	172	18.7%	26	32.9%	170	18.4%	196	19.5%
26 - 30	8	9.0%	54	6.5%	62	6.7%	3	4.4%	64	7.5%	67	7.3%	6	7.6%	90	9.7%	96	9.6%
31 +	10	11.2%	29	3.5%	39	4.2%	5	7.4%	34	4.0%	39	4.2%	4	5.1%	46	5.0%	50	5.0%
Unknown	7	7.9%	70	8.4%	77	8.3%	5	7.4%	69	8.1%	74	8.0%	2	2.5%	67	7.2%	69	6.9%
Total	89	100%	836	100%	925	100%	68	100%	853	100%	921	100%	79	100%	926	100%	1,005	100%

MPH Over Limit	2001						2002						2003					
	Interstate		Non-Interstate		Total		Interstate		Non-Interstate		Total		Interstate		Non-Interstate		Total	
	N	%	N	%	N	%	N	%	N	%	N	%	N	%	N	%	N	%
1 - 5	0	0.0%	1	0.1%	1	0.1%	0	0.0%	1	0.1%	1	0.1%	0	0.0%	2	0.4%	2	0.3%
6 - 10	1	1.3%	37	4.2%	38	3.9%	1	1.4%	41	5.5%	42	5.2%	1	1.6%	28	5.4%	29	4.9%
11 - 15	12	15.0%	173	19.5%	185	19.1%	9	13.0%	135	18.1%	144	17.7%	14	22.2%	93	17.8%	107	18.3%
16 - 20	36	45.0%	313	35.3%	349	36.1%	22	31.9%	247	33.2%	269	33.0%	24	38.1%	168	32.1%	192	32.8%
21 - 25	16	20.0%	165	18.6%	181	18.7%	14	20.3%	115	15.4%	129	15.8%	13	20.6%	88	16.8%	101	17.2%
26 - 30	4	5.0%	70	7.9%	74	7.7%	11	15.9%	75	10.1%	86	10.6%	5	7.9%	32	6.1%	37	6.3%
31 +	5	6.3%	48	5.4%	53	5.5%	7	10.1%	30	4.0%	37	4.5%	3	4.8%	15	2.9%	18	3.1%
Unknown	6	7.5%	80	9.0%	86	8.9%	5	7.2%	101	13.6%	106	13.0%	3	4.8%	97	18.5%	100	17.1%
Total	80	100%	887	100%	967	100%	69	100%	745	100%	814	100%	63	100%	523	100%	586	100%

* Includes data entered through 9/30/04.

VERMONT TRAFFIC CITATIONS FILED 1998 - 2003 *
SPEEDING CITATIONS: MPH OVER POSTED SPEED LIMIT BY HIGHWAY TYPE
DRIVERS AGE 17

MPH Over Limit	1998						1999						2000					
	Interstate		Non-Interstate		Total		Interstate		Non-Interstate		Total		Interstate		Non-Interstate		Total	
	N	%	N	%	N	%	N	%	N	%	N	%	N	%	N	%	N	%
1 - 5	2	0.9%	3	0.2%	5	0.3%	0	0.0%	0	0.0%	0	0.0%	0	0.0%	1	0.1%	1	0.1%
6 - 10	4	1.9%	38	2.6%	42	2.5%	5	2.8%	70	4.5%	75	4.3%	2	1.2%	89	5.3%	91	5.0%
11 - 15	48	22.5%	324	22.3%	372	22.3%	35	19.6%	320	20.7%	355	20.5%	36	21.4%	342	20.6%	378	20.6%
16 - 20	80	37.6%	568	39.0%	648	38.8%	54	30.2%	611	39.4%	665	38.5%	59	35.1%	649	39.0%	708	38.6%
21 - 25	42	19.7%	263	18.1%	305	18.3%	52	29.1%	272	17.6%	324	18.8%	38	22.6%	291	17.5%	329	18.0%
26 - 30	21	9.9%	106	7.3%	127	7.6%	16	8.9%	115	7.4%	131	7.6%	19	11.3%	115	6.9%	134	7.3%
31 +	10	4.7%	51	3.5%	61	3.7%	9	5.0%	57	3.7%	66	3.8%	11	6.5%	74	4.4%	85	4.6%
Unknown	6	2.8%	102	7.0%	108	6.5%	8	4.5%	104	6.7%	112	6.5%	3	1.8%	103	6.2%	106	5.8%
Total	213	100%	1,455	100%	1,668	100%	179	100%	1,549	100%	1,728	100%	168	100%	1,664	100%	1,832	100%

MPH Over Limit	2001						2002						2003					
	Interstate		Non-Interstate		Total		Interstate		Non-Interstate		Total		Interstate		Non-Interstate		Total	
	N	%	N	%	N	%	N	%	N	%	N	%	N	%	N	%	N	%
1 - 5	0	0.0%	2	0.1%	2	0.1%	0	0.0%	7	0.4%	7	0.4%	1	0.5%	1	0.1%	2	0.1%
6 - 10	7	2.9%	58	3.4%	65	3.4%	2	0.8%	69	4.0%	71	3.6%	3	1.5%	68	5.7%	71	5.1%
11 - 15	35	14.5%	349	20.7%	384	19.9%	28	11.5%	347	20.2%	375	19.2%	28	13.9%	265	22.4%	293	21.2%
16 - 20	87	36.1%	650	38.6%	737	38.2%	78	32.1%	665	38.8%	743	38.0%	72	35.8%	387	32.7%	459	33.2%
21 - 25	63	26.1%	335	19.9%	398	20.7%	67	27.6%	268	15.6%	335	17.1%	50	24.9%	184	15.6%	234	16.9%
26 - 30	27	11.2%	110	6.5%	137	7.1%	38	15.6%	110	6.4%	148	7.6%	25	12.4%	62	5.2%	87	6.3%
31 +	18	7.5%	79	4.7%	97	5.0%	14	5.8%	71	4.1%	85	4.3%	12	6.0%	50	4.2%	62	4.5%
Unknown	4	1.7%	103	6.1%	107	5.6%	16	6.6%	177	10.3%	193	9.9%	10	5.0%	166	14.0%	176	12.7%
Total	241	100%	1,686	100%	1,927	100%	243	100%	1,714	100%	1,957	100%	201	100%	1,183	100%	1,384	100%

* Includes data entered through 9/30/04.

VERMONT TRAFFIC CITATIONS FILED 1998 - 2003 *
NUMBER OF CITATIONS BY MONTH ISSUED
DRIVERS AGE 16

Month Issued	1998		1999		2000		2001		2002		2003		Total	
	N	%	N	%	N	%	N	%	N	%	N	%	N	%
January	80	4.8%	57	3.6%	84	4.8%	133	7.4%	109	6.8%	93	7.8%	556	5.8%
February	109	6.5%	96	6.0%	121	6.9%	115	6.4%	111	7.0%	91	7.6%	643	6.7%
March	134	8.0%	114	7.1%	141	8.1%	156	8.7%	164	10.3%	145	12.1%	854	8.9%
April	136	8.2%	124	7.8%	140	8.0%	134	7.5%	146	9.2%	123	10.3%	803	8.4%
May	147	8.8%	135	8.4%	163	9.3%	143	8.0%	153	9.6%	155	13.0%	896	9.3%
June	166	10.0%	162	10.1%	135	7.7%	149	8.3%	148	9.3%	124	10.4%	884	9.2%
July	149	8.9%	151	9.4%	175	10.0%	171	9.5%	179	11.2%	105	8.8%	930	9.7%
August	137	8.2%	165	10.3%	205	11.7%	178	9.9%	119	7.5%	121	10.1%	925	9.6%
September	167	10.0%	163	10.2%	200	11.4%	157	8.8%	125	7.8%	65	5.4%	877	9.1%
October	150	9.0%	177	11.1%	155	8.9%	175	9.8%	129	8.1%	76	6.4%	862	9.0%
November	148	8.9%	108	6.8%	141	8.1%	139	7.7%	110	6.9%	66	5.5%	712	7.4%
December	145	8.7%	146	9.1%	89	5.1%	144	8.0%	101	6.3%	31	2.6%	656	6.8%
Total	1,668	100%	1,598	100%	1,749	100%	1,794	100%	1,594	100%	1,195	100%	9,598	100%

* Includes data entered through 9/30/04.

Produced by the Vermont Center for Justice Research, 11/04.

J:\Requests\Job1519\GraduatedLicenseCites.wb3-TicketMonth

VERMONT TRAFFIC CITATIONS FILED 1998 - 2003 *
NUMBER OF CITATIONS BY MONTH ISSUED
DRIVERS AGE 17

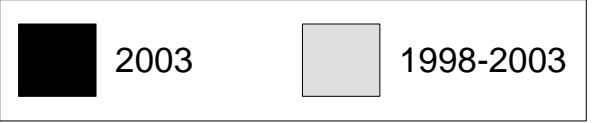
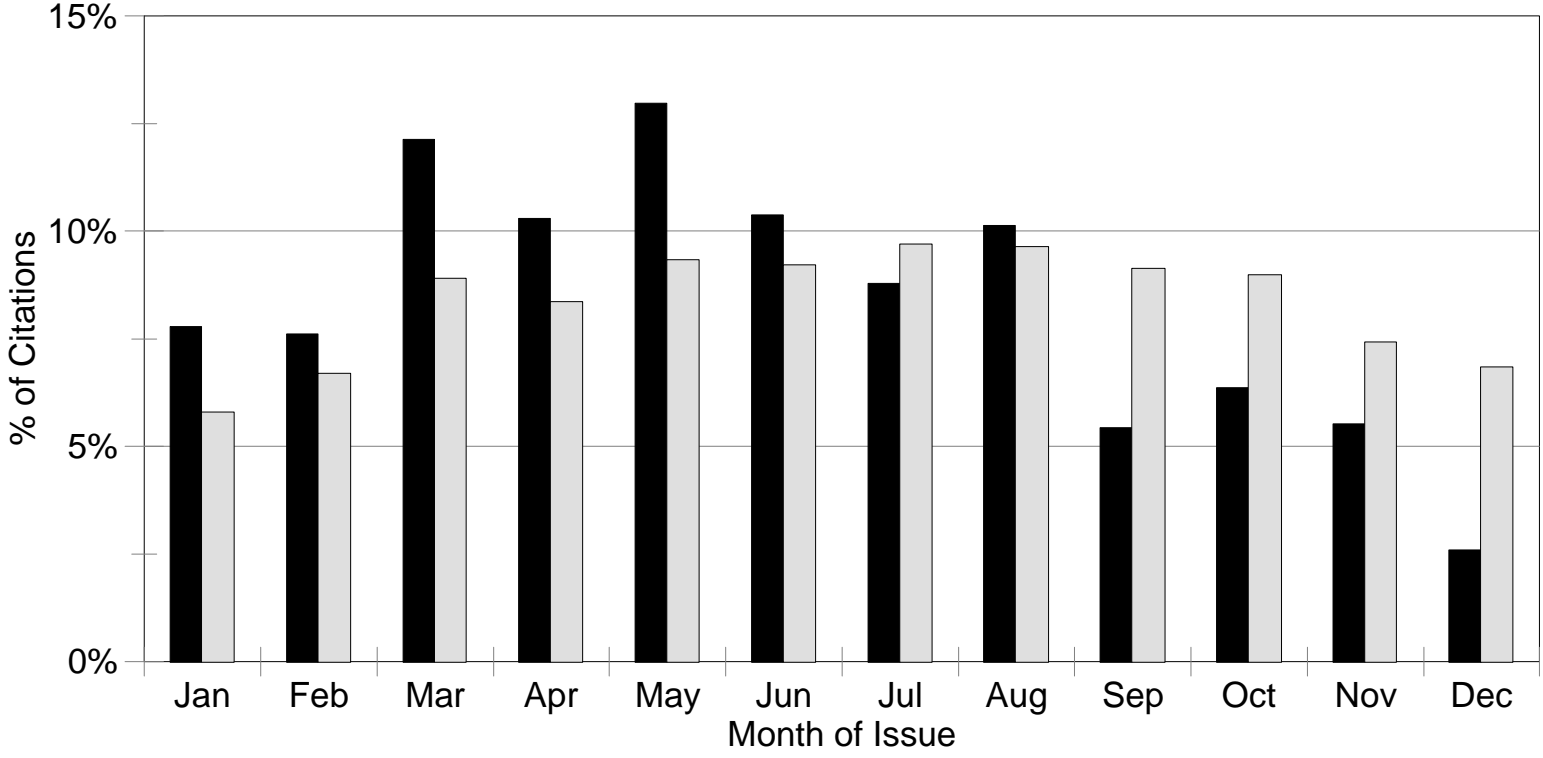
Month Issued	1998		1999		2000		2001		2002		2003		Total	
	N	%	N	%	N	%	N	%	N	%	N	%	N	%
January	177	6.0%	128	4.2%	220	6.7%	235	6.7%	267	8.1%	231	9.1%	1,258	6.8%
February	238	8.1%	221	7.3%	249	7.6%	219	6.3%	256	7.7%	205	8.0%	1,388	7.5%
March	198	6.7%	249	8.3%	277	8.4%	254	7.3%	284	8.6%	308	12.1%	1,570	8.4%
April	271	9.2%	242	8.0%	274	8.3%	298	8.6%	324	9.8%	298	11.7%	1,707	9.2%
May	257	8.7%	295	9.8%	303	9.2%	321	9.2%	380	11.5%	346	13.6%	1,902	10.2%
June	261	8.9%	263	8.7%	291	8.9%	313	9.0%	309	9.3%	252	9.9%	1,689	9.1%
July	270	9.2%	317	10.5%	330	10.0%	328	9.4%	314	9.5%	235	9.2%	1,794	9.7%
August	262	8.9%	274	9.1%	309	9.4%	315	9.0%	234	7.1%	196	7.7%	1,590	8.6%
September	247	8.4%	253	8.4%	304	9.2%	308	8.8%	251	7.6%	147	5.8%	1,510	8.1%
October	236	8.0%	260	8.6%	265	8.1%	321	9.2%	204	6.2%	123	4.8%	1,409	7.6%
November	246	8.4%	235	7.8%	256	7.8%	313	9.0%	222	6.7%	141	5.5%	1,413	7.6%
December	277	9.4%	278	9.2%	209	6.4%	257	7.4%	262	7.9%	69	2.7%	1,352	7.3%
Total	2,940	100%	3,015	100%	3,287	100%	3,482	100%	3,307	100%	2,551	100%	18,582	100%

* Includes data entered through 9/30/04.

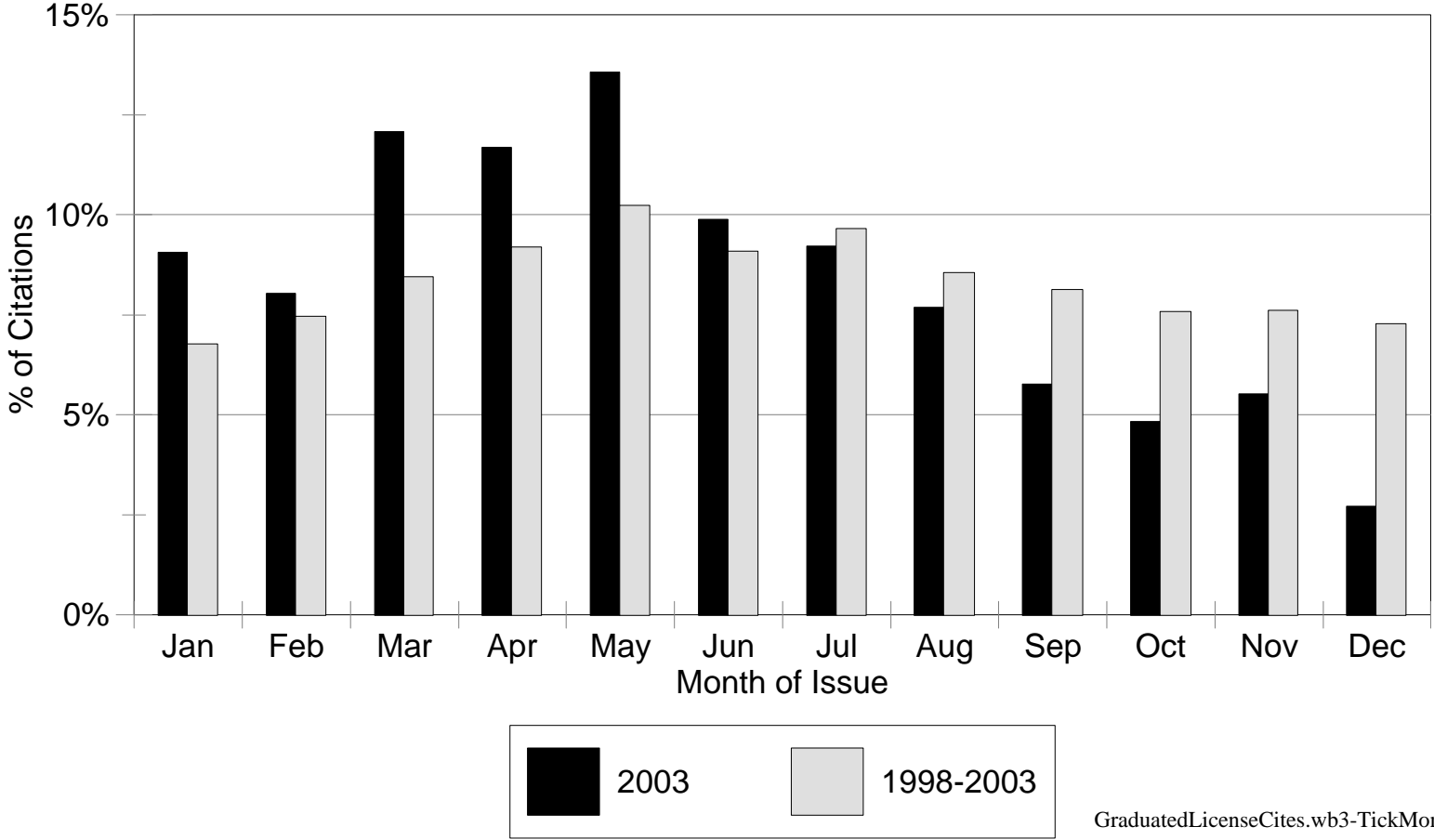
Produced by the Vermont Center for Justice Research, 11/04.

J:\Requests\Job1519\GraduatedLicenseCites.wb3-TicketMonth

% of Traffic Citations Issued by Month 2003 vs 1998-2003 Drivers Age 16



% of Traffic Citations Issued by Month 2003 vs 1998-2003 Drivers Age 17



VERMONT TRAFFIC CITATIONS FILED 1998 - 2003 *
NUMBER OF CITATIONS BY TIME OF DAY
DRIVERS AGE 16

Time of Day	1998		1999		2000		2001		2002		2003		Total	
	N	%	N	%	N	%	N	%	N	%	N	%	N	%
Early Morning (2am-6am)	44	2.6%	40	2.5%	58	3.3%	58	3.2%	34	2.1%	33	2.8%	267	2.8%
Morning (6am-10am)	162	9.7%	138	8.6%	177	10.1%	175	9.8%	163	10.2%	124	10.4%	939	9.8%
Midday (10am-2pm)	272	16.3%	186	11.6%	230	13.2%	258	14.4%	207	13.0%	155	13.0%	1,308	13.6%
Afternoon (2pm-6pm)	451	27.0%	445	27.8%	452	25.8%	466	26.0%	465	29.2%	328	27.4%	2,607	27.2%
Evening (6pm-10pm)	416	24.9%	413	25.8%	483	27.6%	493	27.5%	428	26.9%	298	24.9%	2,531	26.4%
Night (10pm-2am)	300	18.0%	361	22.6%	328	18.8%	326	18.2%	253	15.9%	163	13.6%	1,731	18.0%
Unknown	23	1.4%	15	0.9%	21	1.2%	18	1.0%	44	2.8%	94	7.9%	215	2.2%
Total	1,668	100%	1,598	100%	1,749	100%	1,794	100%	1,594	100%	1,195	100%	9,598	100%

* Includes data entered through 9/30/04.

Produced by the Vermont Center for Justice Research, 11/04.

J:\Requests\Job1519\GraduatedLicenseCites.wb3-TimeOfDay

VERMONT TRAFFIC CITATIONS FILED 1998 - 2003 *
NUMBER OF CITATIONS BY TIME OF DAY
DRIVERS AGE 17

Time of Day	1998		1999		2000		2001		2002		2003		Total	
	N	%	N	%	N	%	N	%	N	%	N	%	N	%
Early Morning (2am-6am)	84	2.9%	88	2.9%	104	3.2%	97	2.8%	84	2.5%	62	2.4%	519	2.8%
Morning (6am-10am)	313	10.6%	309	10.2%	304	9.2%	364	10.5%	349	10.6%	257	10.1%	1,896	10.2%
Midday (10am-2pm)	435	14.8%	437	14.5%	455	13.8%	561	16.1%	565	17.1%	422	16.5%	2,875	15.5%
Afternoon (2pm-6pm)	734	25.0%	746	24.7%	863	26.3%	921	26.5%	866	26.2%	653	25.6%	4,783	25.7%
Evening (6pm-10pm)	717	24.4%	784	26.0%	825	25.1%	856	24.6%	765	23.1%	603	23.6%	4,550	24.5%
Night (10pm-2am)	630	21.4%	614	20.4%	691	21.0%	660	19.0%	587	17.8%	379	14.9%	3,561	19.2%
Unknown	27	0.9%	37	1.2%	45	1.4%	23	0.7%	91	2.8%	175	6.9%	398	2.1%
Total	2,940	100%	3,015	100%	3,287	100%	3,482	100%	3,307	100%	2,551	100%	18,582	100%

* Includes data entered through 9/30/04.

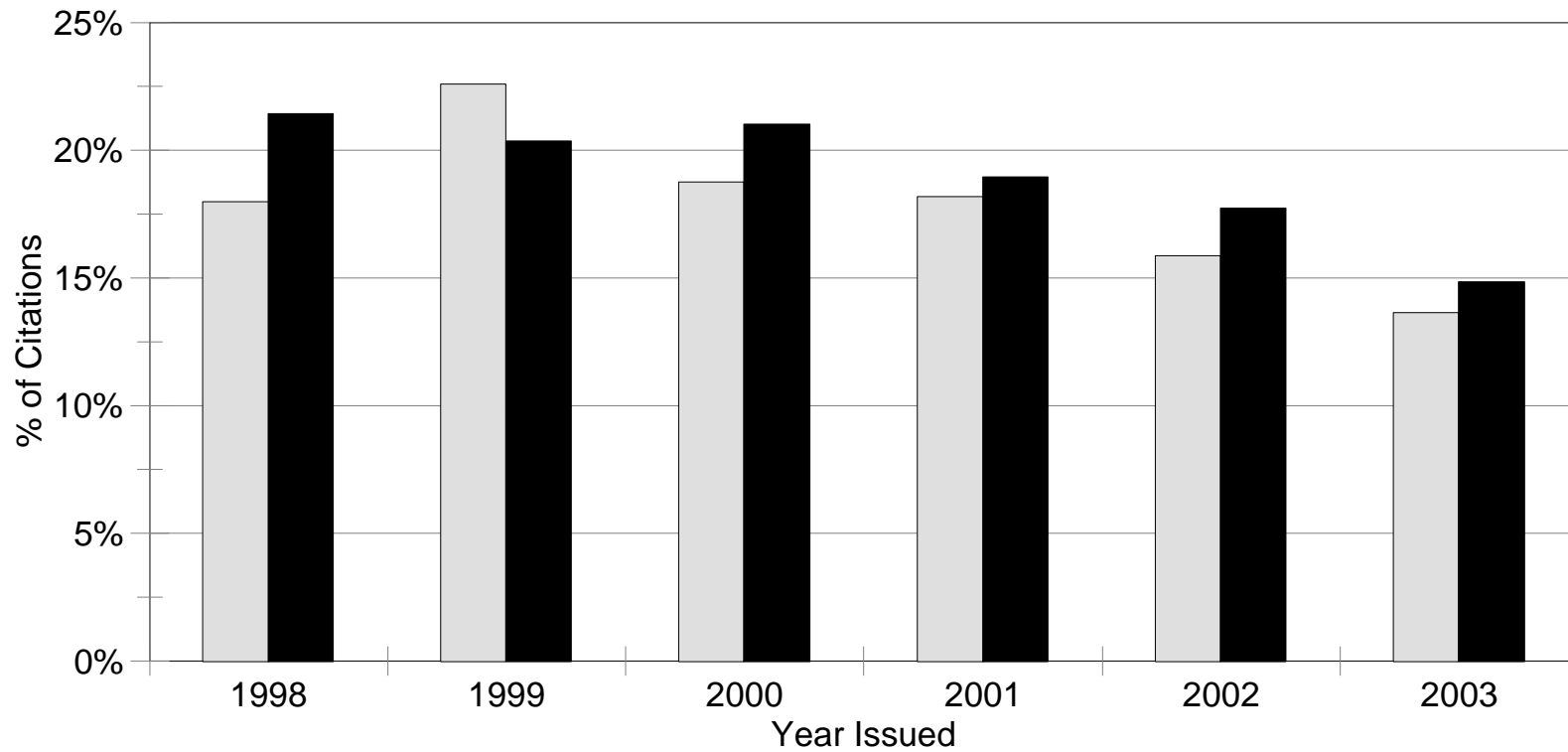
Produced by the Vermont Center for Justice Research, 11/04.

J:\Requests\Job1519\GraduatedLicenseCites.wb3-TimeOfDay

Traffic Citations Issued 1998-2003

% Issued During Night Hours (10pm-2am)

Drivers Age 16 and 17



Drivers Age 16 Drivers Age 17